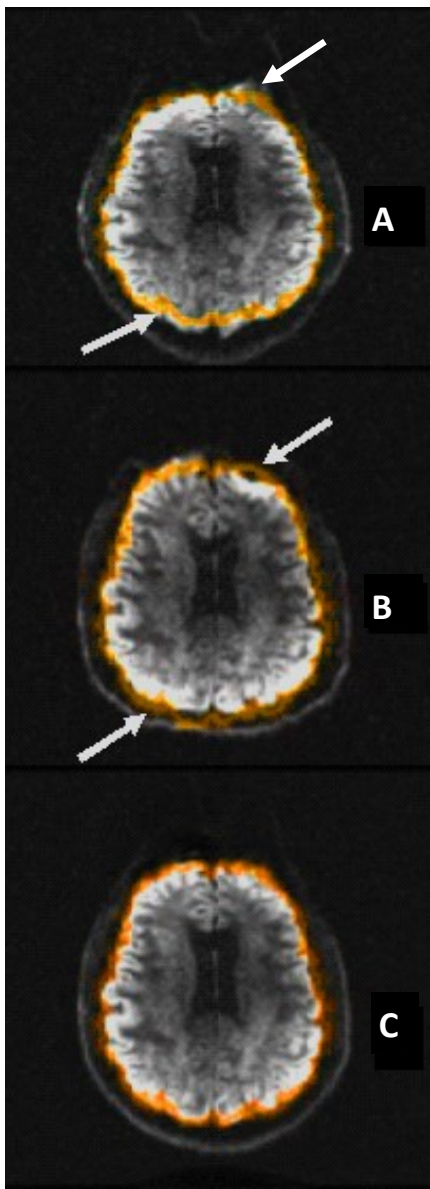




DTI TOPUP Distortion Correction Protocols

- ◆ Explore the new DTI Protocols available on the CFMRI's 3T scanners
- ◆ Use these protocols to correct your images for geometric distortions
- ◆ Superior results compared to conventional field mapping methods



A brain slice image acquired in positive phase encoding direction.

The orange outline indicates the true shape of the brain derived from a T1 structural scan.

Same brain slice acquired in negative phase encoding direction.

Distortion in phase encoding direction (indicated by small arrows) is opposite from A.

The brain slice after applying TOPUP. The distortion has been corrected.

For more information visit the CFMRI website at

<http://fmri.ucsd.edu/Howto/3T/DTI-TOPUP.html> or email cfmri@ucsd.edu