

Bioengineering 280A
Principles of Biomedical Imaging

Fall Quarter 2004
MRI Lecture 4

TT Liu, BE280A, UCSD Fall 2004

Topics

- Velocity Imaging
- Perfusion Imaging
- Diffusion Imaging
- Functional MRI

TT Liu, BE280A, UCSD Fall 2004

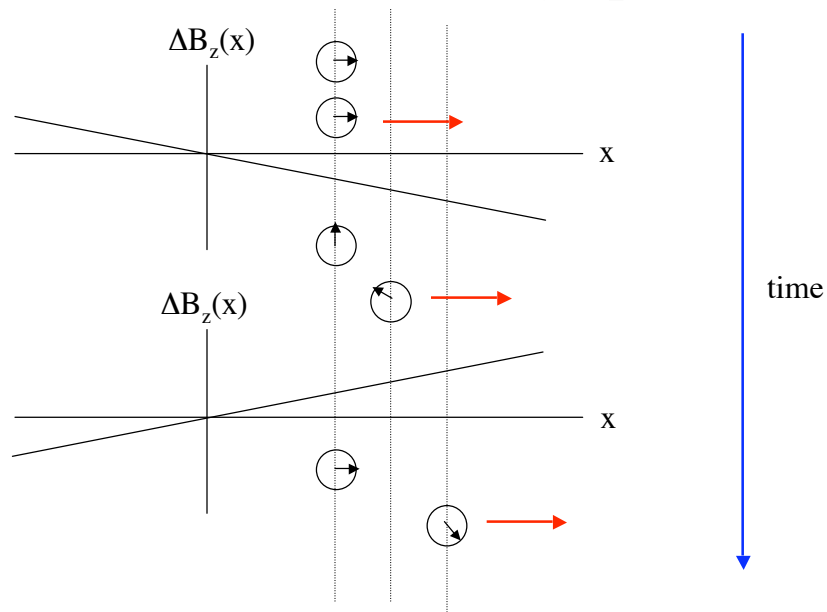
Moving Spins

So far we have assumed that the spins are not moving (aside from thermal motion giving rise to relaxation), and contrast has been based upon T_1 , T_2 , and proton density. We were able to achieve different contrasts by adjusting the appropriate pulse sequence parameters.

Biological samples are filled with moving spins, and we can also use MRI to image the movement. Examples: blood flow, diffusion of water in the white matter tracts. In addition, we can also sometimes induce motion into the object to image its mechanical properties, e.g. imaging of stress and strain with MR elastography.

TT Liu, BE280A, UCSD Fall 2004

Phase of Moving Spin



TT Liu, BE280A, UCSD Fall 2004

Phase of a Moving Spin

$$\begin{aligned}\varphi(t) &= -\int_0^t \Delta\omega(\tau) d\tau \\ &= -\int_0^t \gamma \Delta B(\tau) d\tau \\ &= -\int_0^t \gamma \vec{G}(\tau) \cdot \vec{r}(\tau) d\tau \\ &= -\gamma \int_0^t [G_x(\tau)x(\tau) + G_y(\tau)y(\tau) + G_z(\tau)z(\tau)] d\tau\end{aligned}$$

TT Liu, BE280A, UCSD Fall 2004

Phase of Moving Spin

Consider motion along the x-axis

$$x(t) = x_0 + vt + \frac{1}{2}at^2$$

$$\begin{aligned}\varphi(t) &= -\gamma \int_0^t G_x(\tau)x(\tau) d\tau \\ &= -\gamma \int_0^t G_x(\tau) \left[x_0 + v\tau + \frac{1}{2}a\tau^2 \right] d\tau \\ &= -\gamma \left[x_0 \int_0^t G_x(\tau) d\tau + v \int_0^t G_x(\tau) \tau d\tau + \frac{a}{2} \int_0^t G_x(\tau) \tau^2 d\tau \right] \\ &= -\gamma \left[x_0 M_0 + v M_1 + \frac{a}{2} M_2 \right]\end{aligned}$$

TT Liu, BE280A, UCSD Fall 2004

Phase of Moving Spin

$$\varphi(t) = -\gamma \left[x_0 M_0 + v M_1 + \frac{a}{2} M_2 \right]$$

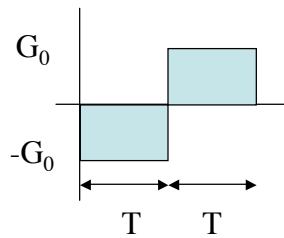
$$M_0 = \int_0^t G_x(\tau) d\tau \quad \text{Zeroth order moment}$$

$$M_1 = \int_0^t G_x(\tau) \tau d\tau \quad \text{First order moment}$$

$$M_2 = \int_0^t G_x(\tau) \tau^2 d\tau \quad \text{Second order moment}$$

TT Liu, BE280A, UCSD Fall 2004

Flow Moment Example



$$M_0 = \int_0^t G_x(\tau) d\tau = 0$$

$$M_1 = \int_0^t G_x(\tau) \tau d\tau$$

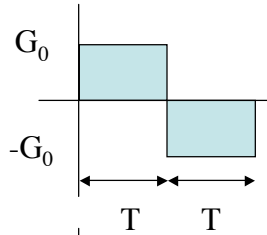
$$= -\int_0^T G_0 \tau d\tau + \int_T^{2T} G_0 \tau d\tau$$

$$= G_0 \left[-\frac{\tau^2}{2} \Big|_0^T + \frac{\tau^2}{2} \Big|_T^{2T} \right]$$

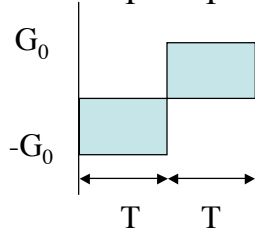
$$= G_0 \left[-\frac{T^2}{2} + \frac{4T^2}{2} - \frac{T^2}{2} \right] = G_0 T^2$$

TT Liu, BE280A, UCSD Fall 2004

Phase Contrast Angiography (PCA)



$$\varphi_1 = -\gamma v_x M_1 = \gamma v_x G_0 T^2$$



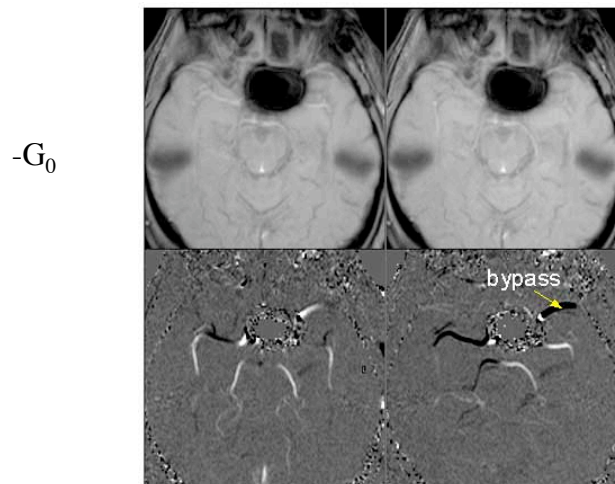
$$\varphi_2 = -\gamma v_x M_1 = -\gamma v_x G_0 T^2$$

$$\Delta\varphi = \varphi_1 - \varphi_2 = 2\gamma v_x G_0 T^2$$

$$v_x = \frac{\Delta\varphi}{2G_0 T^2}$$

TT Liu, BE280A, UCSD Fall 2004

PCA example



$-G_0$

White = Flow direction AP (\downarrow) White = Flow direction RL (\rightarrow)

TT Liu, BE280A, UCSD Fall 2004

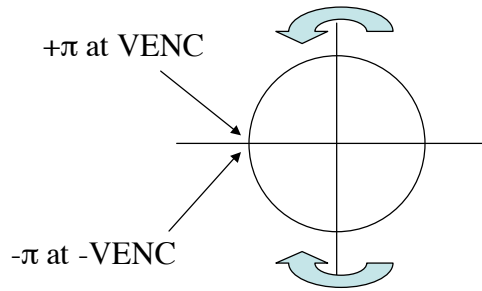
http://www.medical.philips.com/main/products/mri/assets/images/case_of_week/cotw_51_s5.jpg

Aliasing in PCA

Define VENC as the velocity at which the phase is 180 degrees.

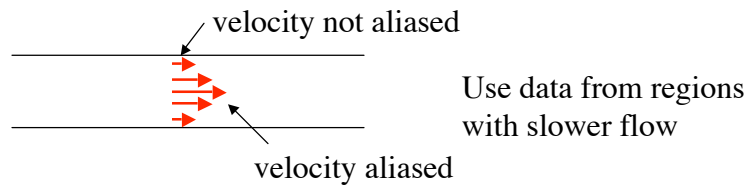
$$VENC \equiv \frac{\pi}{\gamma G_0 T^2}$$

Because of phase wrapping the velocity of spins flowing faster than VENC is ambiguous.



TT Liu, BE280A, UCSD Fall 2004

Aliasing Solutions



Use multiple VENC values so that the phase differences are smaller than π radians.

$$\varphi_1 = \pi \frac{v_x}{VENC_1}$$

$$\varphi_2 = \pi \frac{v_x}{VENC_2}$$

$$\varphi_1 - \varphi_2 = \pi v_x \left(\frac{1}{VENC_1} - \frac{1}{VENC_2} \right)$$

TT Liu, BE280A, UCSD Fall 2004

Velocity k-space

A bipolar gradient introduces a phase modulation across velocities of the form $\varphi(v_x) = -\gamma v_x G_0 T^2$

We can make measurements with different amounts of phase modulation and then integrate over velocities to obtain

$$\begin{aligned} M(k_{v_x}) &= \int_{-\infty}^{\infty} m(v_x) e^{j\varphi(v_x)} dv_x \\ &= \int_{-\infty}^{\infty} m(v_x) e^{-j\gamma v_x G_0 T^2} dv_x \\ &= \int_{-\infty}^{\infty} m(v_x) e^{-j2\pi k_{v_x} v_x} dv_x \\ &= F[m(v_x)] \quad \text{with } k_{v_x} = \frac{\gamma}{2\pi} G_0 T^2 \end{aligned}$$

By making measurements with bipolar gradients of varying amplitudes/durations and taking the inverse transform of the measurements, we can obtain the velocity distribution.

TT Liu, BE280A, UCSD Fall 2004

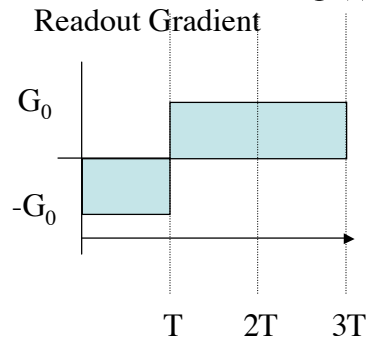
Velocity k-space

$$M(k_x, k_{v_x}) = \int_{-\infty}^{\infty} \int_{-\infty}^{\infty} m(x, v_x) e^{-j2\pi k_x x} e^{-j2\pi k_{v_x} v_x} dx dv_x$$

In addition, we can apply imaging gradients so that we can eventually obtain the velocity distribution at each point in space. A full k-space acquisition would then yield 6 dimensions -- 3 spatial dimensions and 3 velocity dimensions.

TT Liu, BE280A, UCSD Fall 2004

Flow Artifacts



During readout moving spins within the object will accumulate phase that is in addition to the phase used for imaging. This leads to

- 1) Net phase at echo time $TE = 2T$.
- 2) An apparent shift in position of the object.
- 3) Blurring of the object due to a quadratic phase term.

TT Liu, BE280A, UCSD Fall 2004

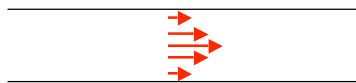
Flow Artifacts

Plug Flow



All moving spins in the voxel experience the same phase shift at echo time.

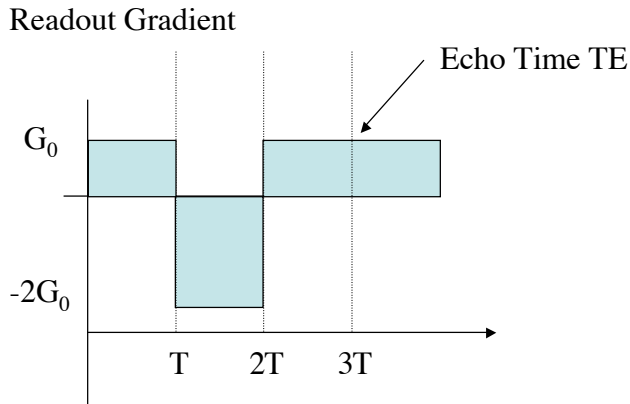
Laminar Flow



Spins have different phase shifts at echo time. The dephasing causes the cancellation and signal dropout.

TT Liu, BE280A, UCSD Fall 2004

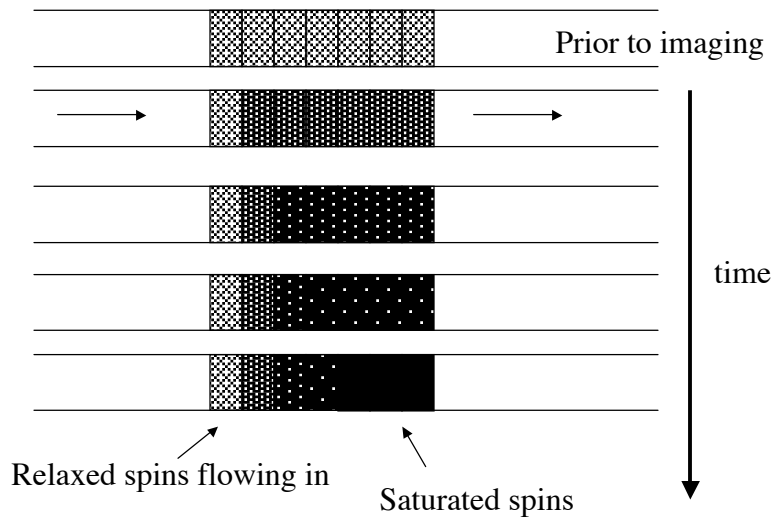
Flow Compensation



At TE both the first and second order moments are zero, so both stationary and moving spins have zero net phase.

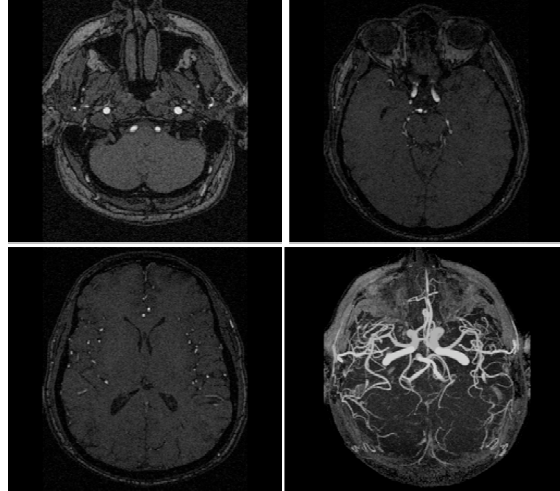
TT Liu, BE280A, UCSD Fall 2004

Inflow Effect



TT Liu, BE280A, UCSD Fall 2004

Time of Flight Angiography



TT Liu, BE280A, UCSD Fall 2004

Cerebral Blood Flow (CBF)

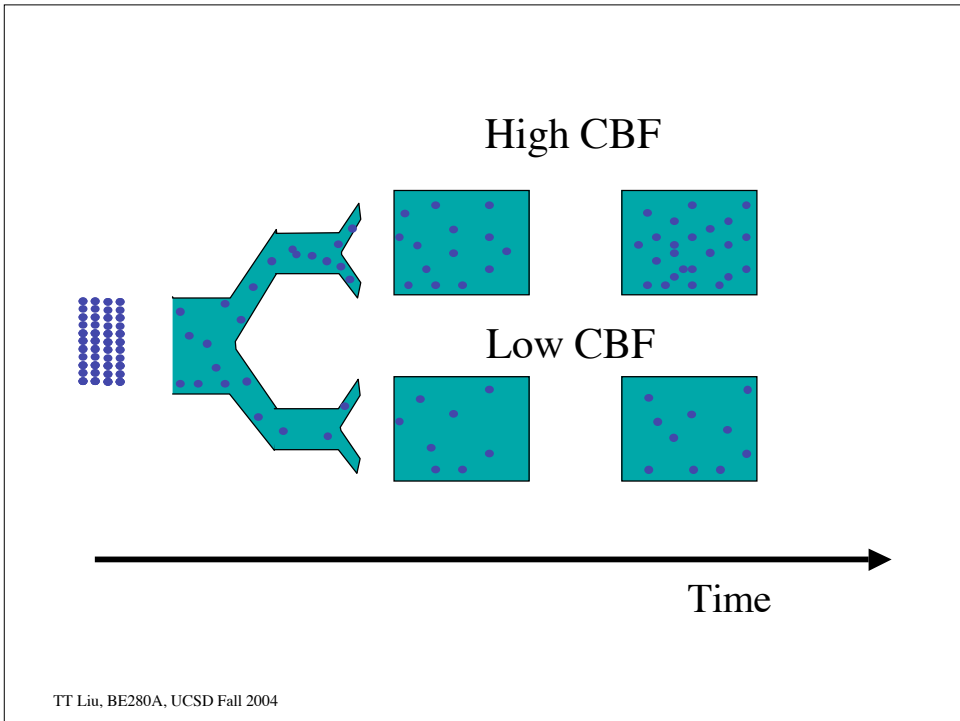
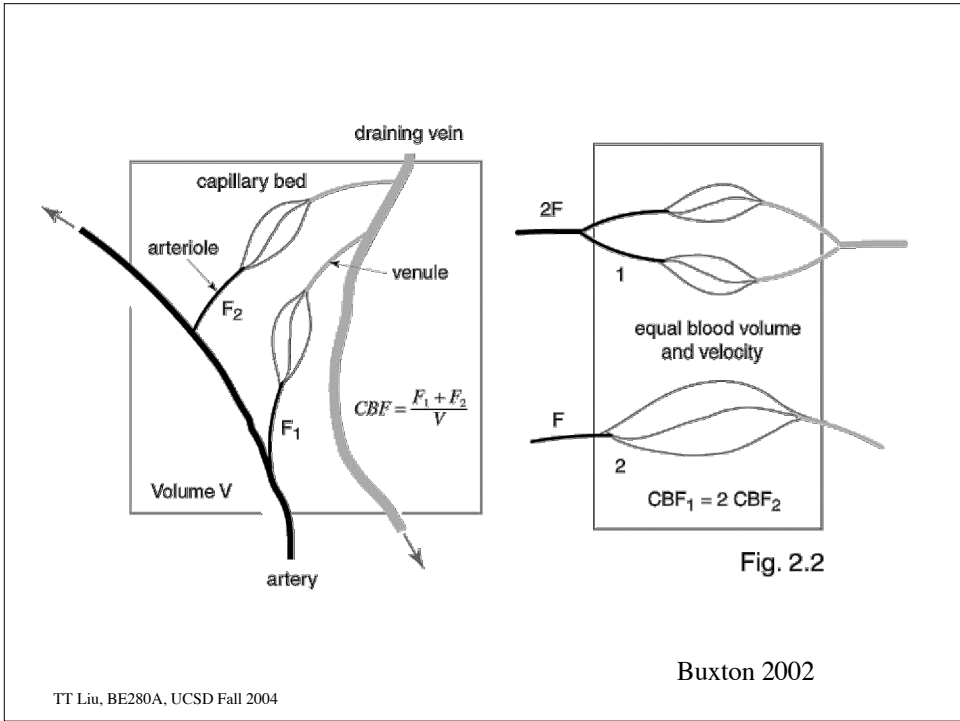
CBF = Perfusion

= Rate of delivery of arterial blood to a capillary bed in tissue.

Units: $\frac{\text{(ml of Blood)}}{\text{(100 grams of tissue)(minute)}}$

Typical value is 60 ml/(100g-min) or
 $60 \text{ ml}/(100 \text{ ml-min}) = 0.01 \text{ s}^{-1}$, assuming
average density of brain equals 1 gm/ml

TT Liu, BE280A, UCSD Fall 2004

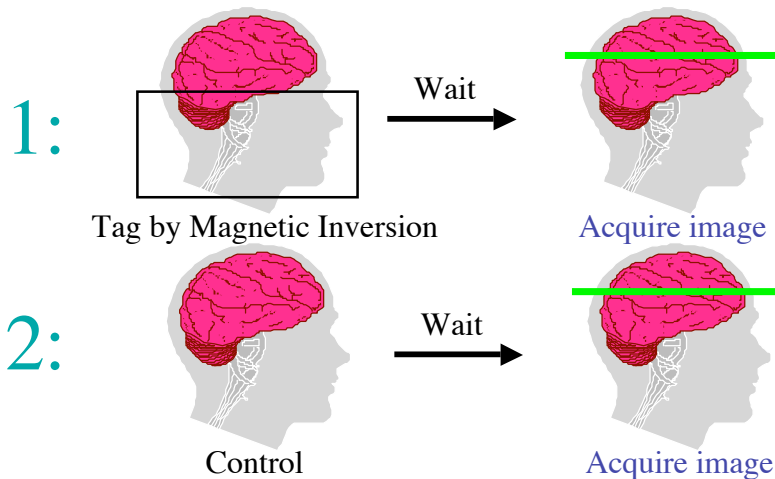


Arterial Spin Labeling

- Magnetically tag inflowing arterial blood
- Wait for tagged blood to flow into imaging slice
- Acquire image of tissue+tagged blood
- Apply control pulse that doesn't tag blood
- Acquire control image of tissue
- Control image-tag image = blood image

TT Liu, BE280A, UCSD Fall 2004

Arterial Spin Labeling (ASL)



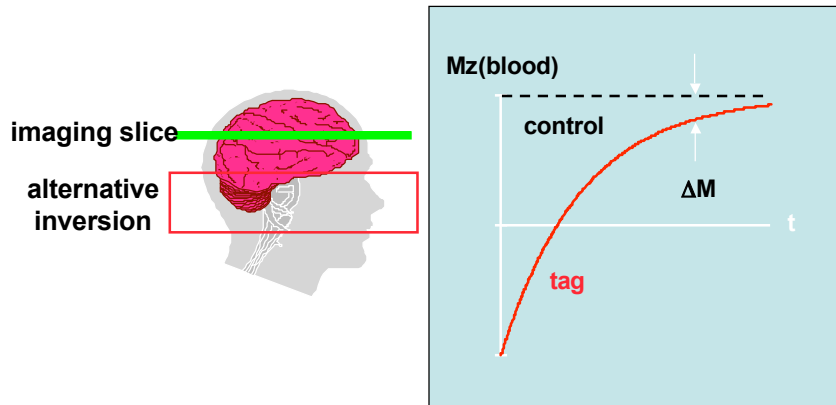
$$\text{Control} - \text{Tag} \propto \text{CBF}$$

TT Liu, BE280A, UCSD Fall 2004

Credit: Wen-Ming Luh

Arterial Spin Labeling (ASL)

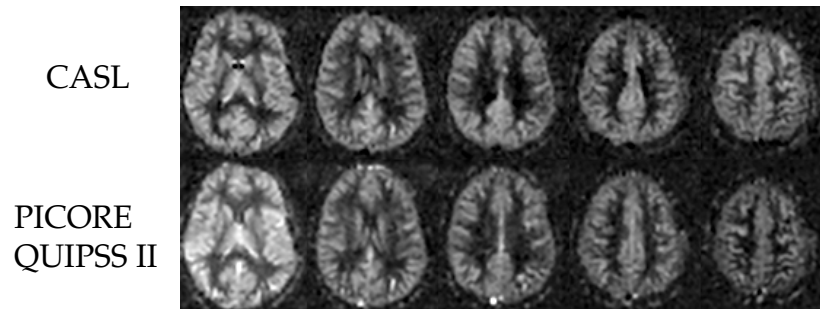
- water protons as freely diffusible tracers



Courtesy of Wen-Ming Luh

TT Liu, BE280A, UCSD Fall 2004

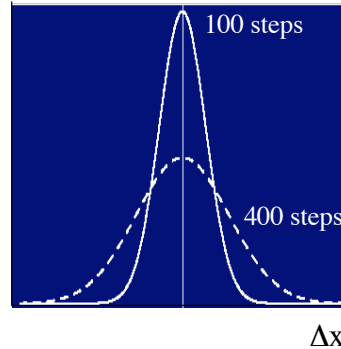
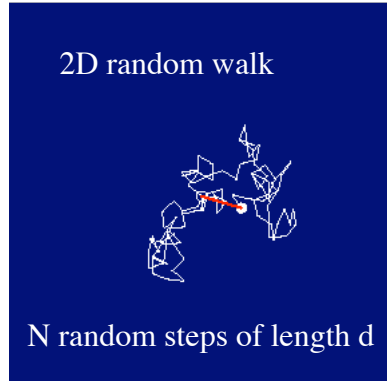
Multislice CASL and PICORE



TT Liu, BE280A, UCSD Fall 2004

Credit: E. Wong

Diffusion



$$\langle \Delta x^2 \rangle = Nd^2 = 2DT$$

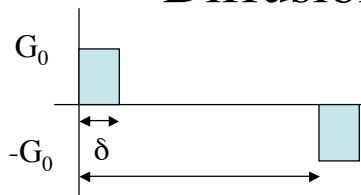
D = diffusivity

In brain:
 $D \approx 0.001 \text{ mm}^2/\text{s}$
 For $T=100 \text{ msec}$,
 $\Delta x \approx 15 \mu$

Credit: Larry Frank

TT Liu, BE280A, UCSD Fall 2004

Diffusion Weighting



Assume $\delta \ll T$

$$\varphi(t_1) \approx -\gamma G_0 x(t_1) \delta$$

$$\varphi(t_2) \approx +\gamma G_0 x(t_2) \delta$$

Net Phase T

$$\varphi \approx \varphi(t_1) + \varphi(t_2) = \gamma G_0 [x(t_2) - x(t_1)] \delta = \gamma G_0 \Delta x \delta$$

Average Squared Phase

$$\langle \varphi^2 \rangle = \gamma^2 G_0^2 \delta^2 \langle (\Delta x)^2 \rangle = \gamma^2 G_0^2 \delta^2 2DT$$

Signal

$$S \propto e^{-\langle \varphi^2 \rangle / 2} = e^{-\gamma^2 G_0^2 \delta^2 DT} = e^{-bD} \quad \text{where } b = \gamma^2 G_0^2 \delta^2 T$$

$$\text{A more careful analysis yields } b = \gamma^2 G_0^2 \delta^2 (T - \delta/3)$$

b-factor

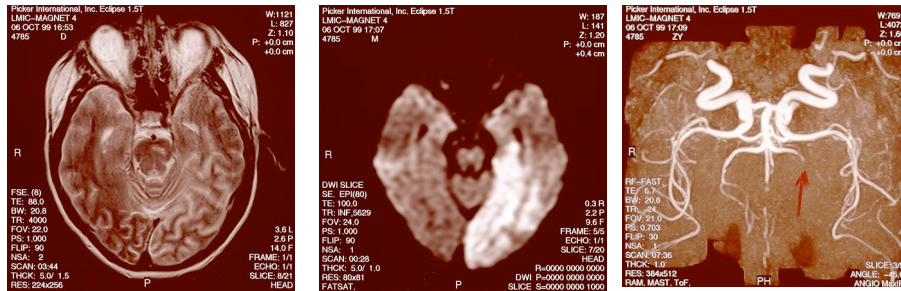
TT Liu, BE280A, UCSD Fall 2004

Diffusion Weighted Images

T2 weighted

Diffusion Weighted

Angiogram



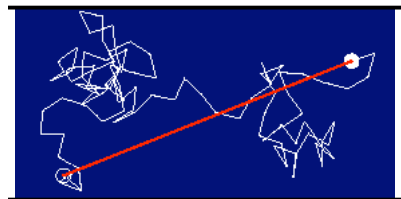
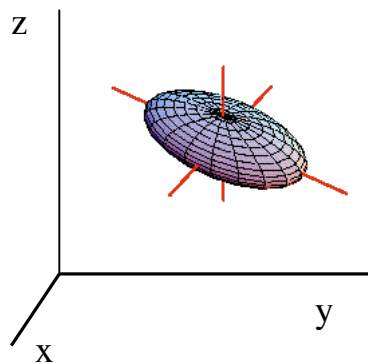
After a stroke, normal water movement is restricted in the region of damage. Diffusivity decreases, so the signal intensity increases.

TT Liu, BE280A, UCSD Fall 2004

<http://lehighmri.com/cases/dwi/patient-b.html>

Restricted Diffusion

D depends on direction

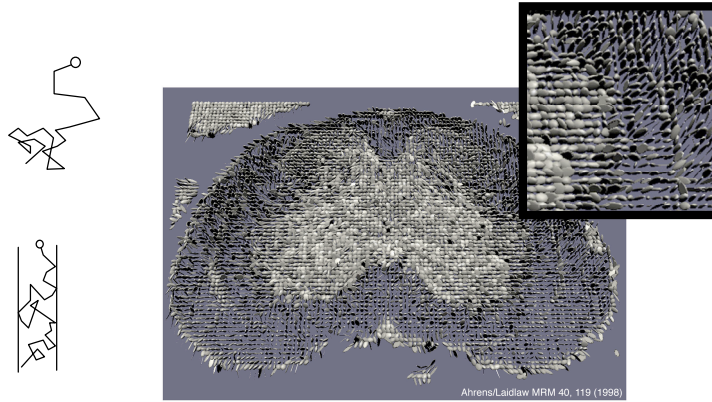


Diffusion tensor:
3 values of D
3 angles

TT Liu, BE280A, UCSD Fall 2004

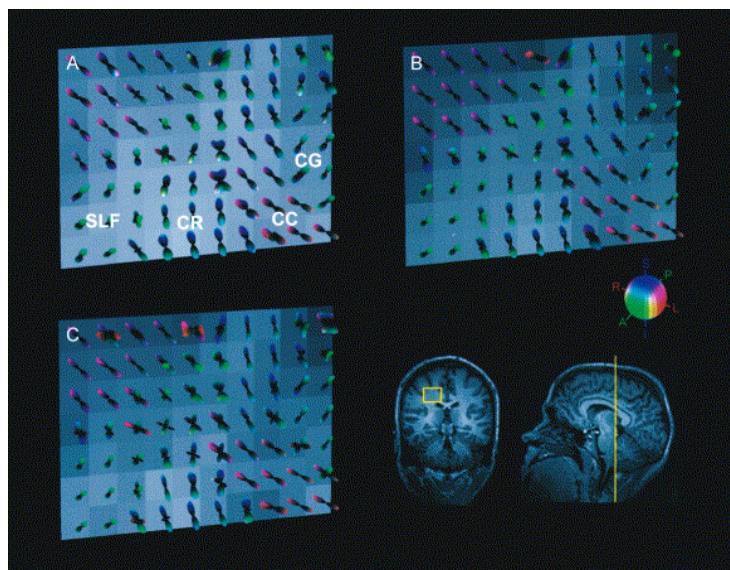
Credit: Larry Frank

Diffusion Imaging Example



TT Liu, BE280A, UCSD Fall 2004

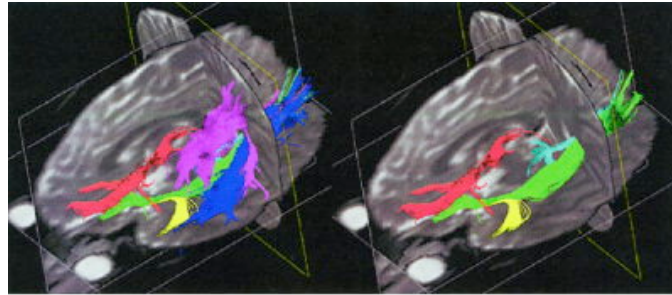
Q-ball imaging



TT Liu, BE280A, UCSD Fall 2004

Tuch et al, Neuron 2003

Fiber Tract Mapping



a

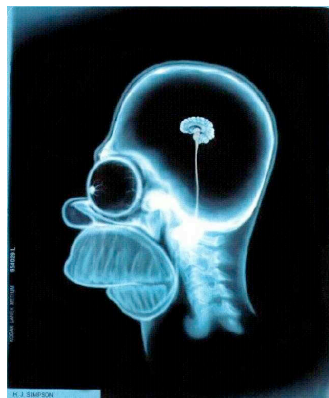
b

Mori et al., MRM 2002

TT Liu, BE280A, UCSD Fall 2004

fMRI

MRI studies brain anatomy.



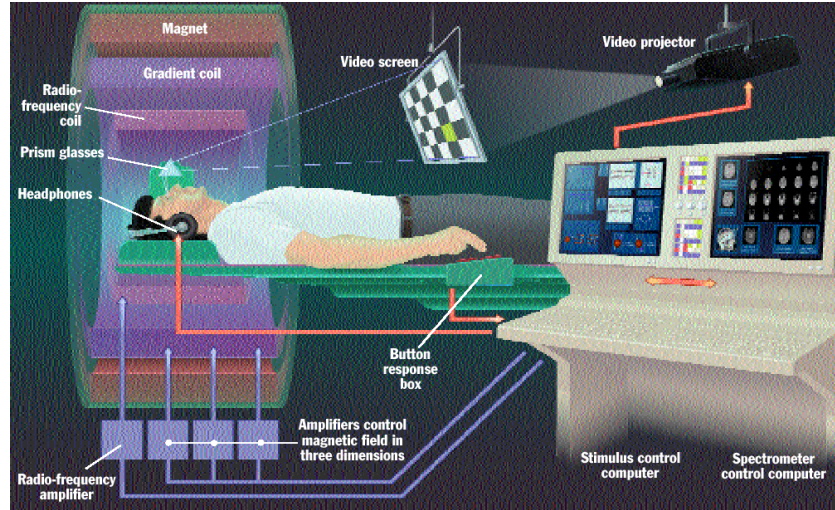
TT Liu, BE280A, UCSD Fall 2004

**Functional MRI (fMRI)
studies brain function.**



http://defiant.ssc.uwo.ca/jody_web/fmri4dummies.htm

fMRI Setup



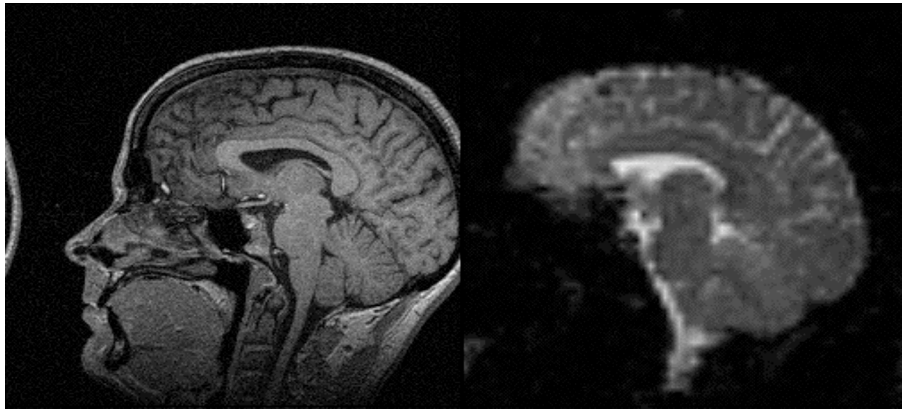
http://defiant.ssc.uwo.ca/Iody_web/fmri4dummies.htm

TT Liu, BE280A, UCSD Fall 2004

fMRI Acquisition

High spatial resolution

High temporal resolution



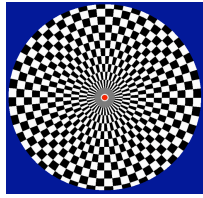
MP-RAGE
Voxel volume: 1 mm^3
Imaging time: 6 min

EPI
Voxel volume: 45 mm^3
Imaging time: 60 msec

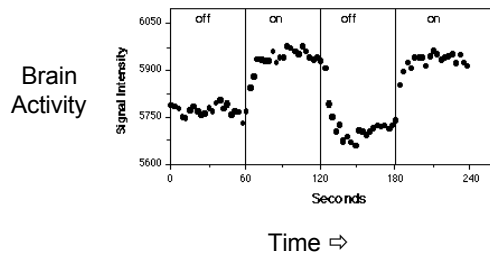
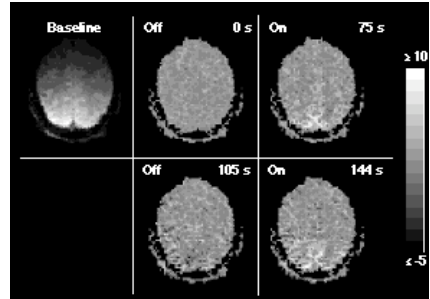
TT Liu, BE280A, UCSD Fall 2004

Buxton 2002

Visual Activation



Flickering Checkerboard
OFF (60 s) - ON (60 s) - OFF (60 s) - ON (60 s) - OFF (60 s)

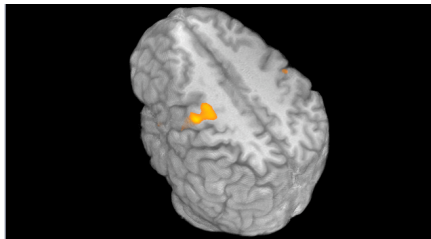


Source: Kwong et al., 1992

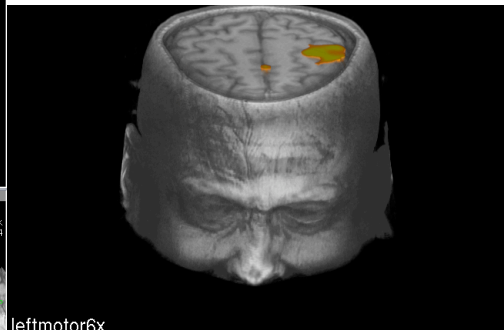
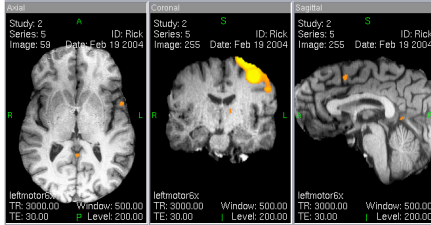
TT Liu, BE280A, UCSD Fall 2004

http://defiant.ssc.uwo.ca/Jody_web/fmri4dummies.htm

Finger Tapping Task



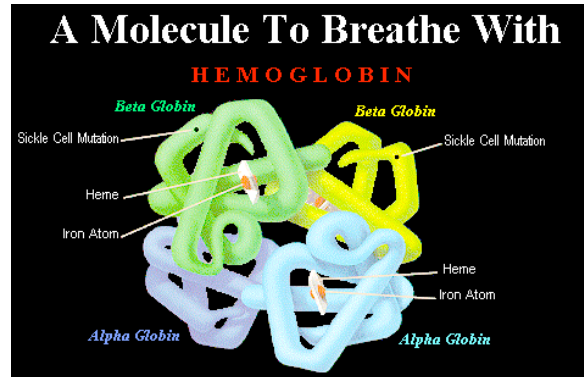
leftmotor6x



leftmotor6x

TT Liu, BE280A, UCSD Fall 2004

Hemoglobin



Oxygen binds to the iron atoms to form oxyhemoglobin HbO_2
Release of O_2 to tissue results in deoxyhemoglobin dHbO_2

TT Liu, BE280A, UCSD Fall 2004

<http://www.people.virginia.edu/~rjh9u/hemoglob.html>

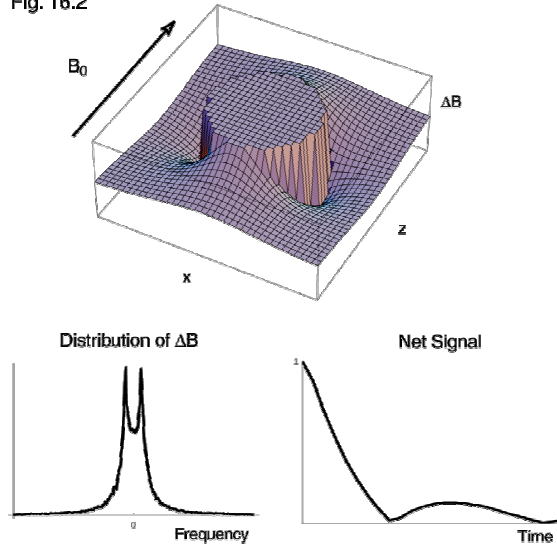
Effect of dHbO_2

dHbO_2 is paramagnetic due to the iron atoms. As it becomes oxygenated, it becomes less paramagnetic.

dHbO_2 perturbs the local magnetic fields. As blood becomes more deoxygenated, the amount of perturbation increases and there is more dephasing of the spins. Thus as dHbO_2 increases we find that T_2^* decreases and the amplitude $\exp(-TE/T_2^*)$ image of a T_2^* weighted image will decrease. Conversely as dHbO_2 decreases, T_2^* increases and we expect the signal amplitude to go up.

TT Liu, BE280A, UCSD Fall 2004

Field Distortions Around a Magnetized Blood Vessel
 Fig. 16.2



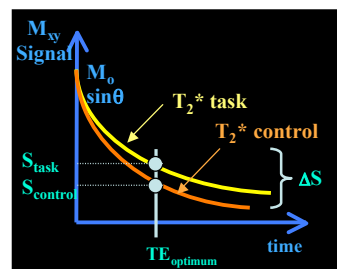
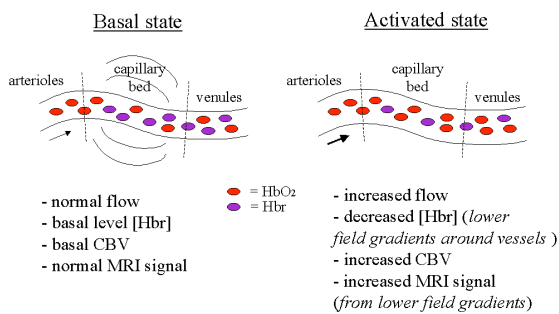
TT Liu, BE280A, UCSD Fall 2004

Buxton 2002

BOLD Effect

Blood Oxygen Level Dependent signal

neural activity → ↑ blood flow → ↑ oxyhemoglobin → ↑ T₂ → ↑ MR signal



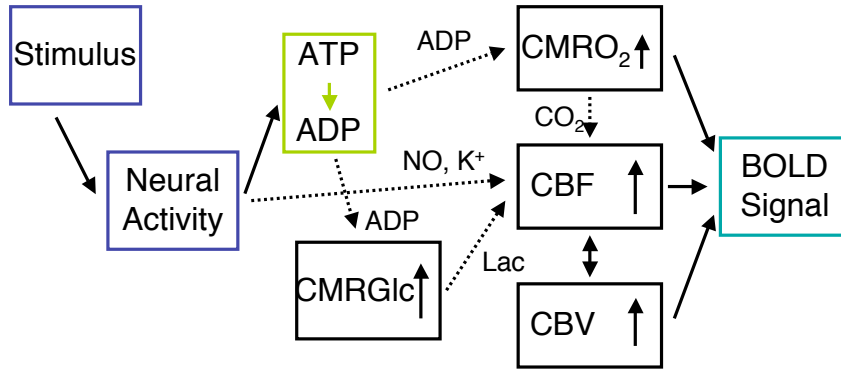
Source: [fMRIB Brief Introduction to fMRI](#)

Source: Jorge Jovicich

TT Liu, BE280A, UCSD Fall 2004

http://defiant.ssc.uwo.ca/Jody_web/fmri4dummies.htm

BOLD Dynamics

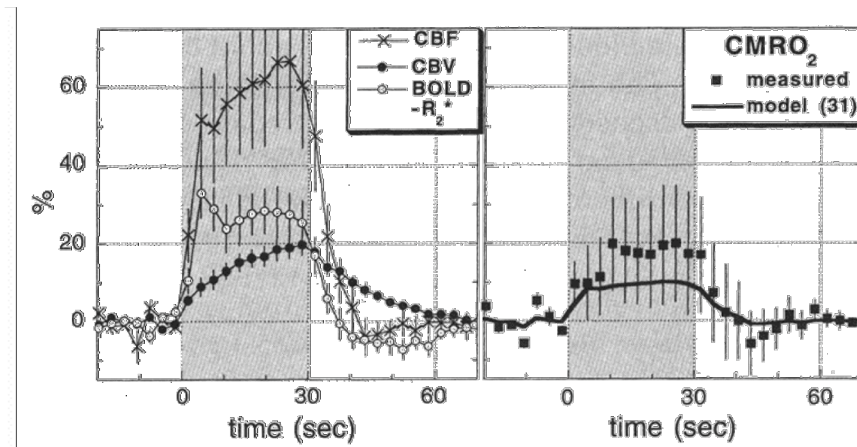


TT Liu, BE280A, UCSD Fall 2004

Credit: Rick Buxton

BOLD Dynamics

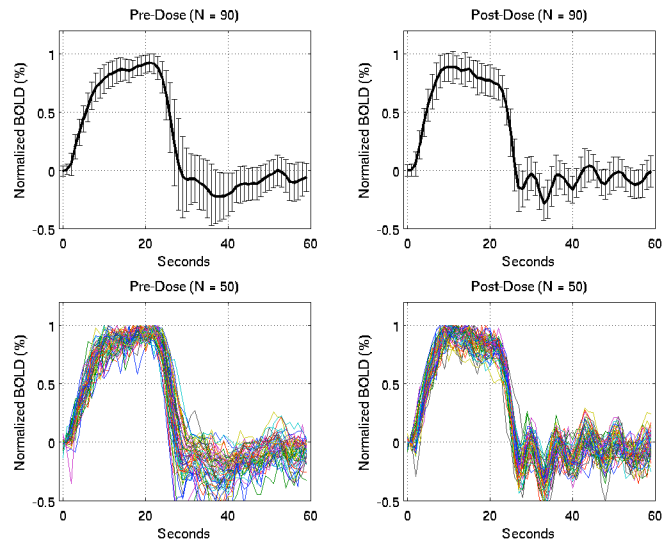
Fig. 17.5 Rat Forepaw Stimulation
(Mandeville, et al, 1999)



TT Liu, BE280A, UCSD Fall 2004

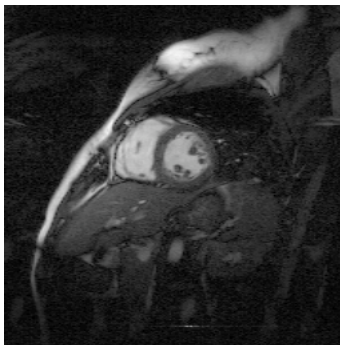
Buxton 2002

BOLD and Vascular Dynamics



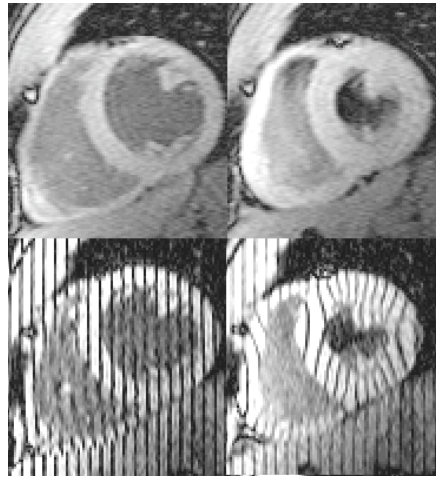
TT Liu, BE280A, UCSD Fall 2004

Cardiac Imaging



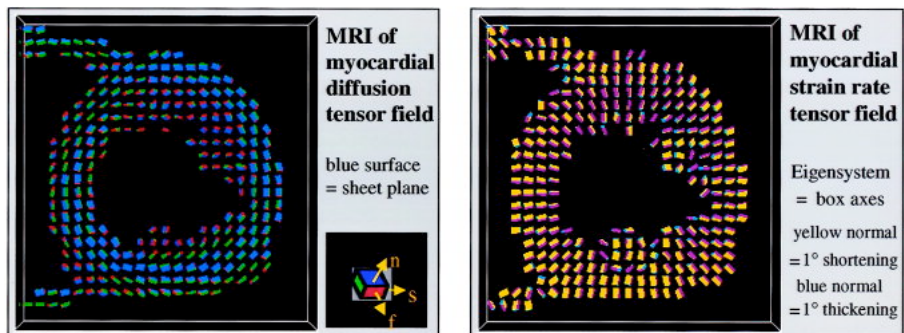
TT Liu, BE280A, UCSD Fall 2004

Cardiac Tagging



TT Liu, BE280A, UCSD Fall 2004

Cardiac Diffusion and Strain



Dou et al, MRM 2003

TT Liu, BE280A, UCSD Fall 2004