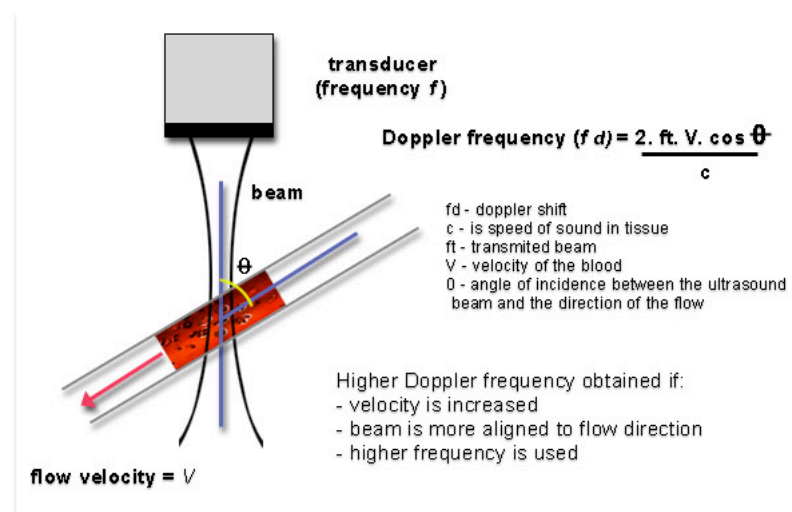


Bioengineering 280A
Principles of Biomedical Imaging

Fall Quarter 2005
Ultrasound Lecture 3

TT Liu, BE280A, UCSD, Fall 2005

Doppler Effect



http://www.centrus.com.br/DiplomaFMF/SeriesFMF/doppler/capitulos-html/chapter_01.htm

TT Liu, BE280A, UCSD, Fall 2005

Doppler Effect

$$\Delta f = \frac{2vf_0}{c - v} \approx \frac{2vf_0}{c}$$

Example

$$v = 50 \text{ cm/s}$$

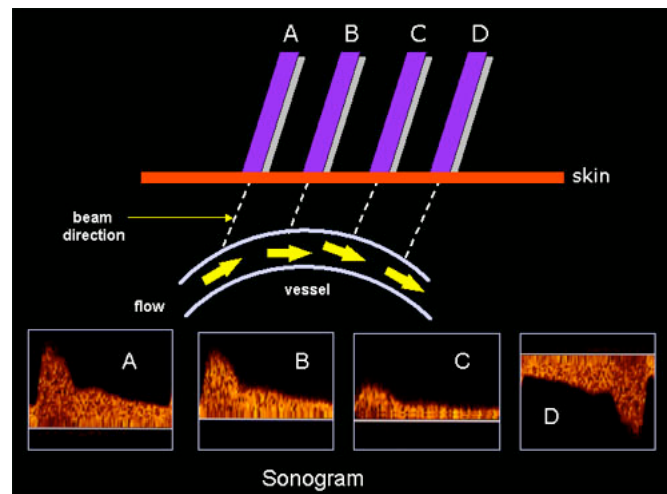
$$c = 1500 \text{ m/s}$$

$$f_0 = 5 \text{ MHz}$$

$$\frac{2vf_0}{c} = 3333 \text{ Hz}$$

TT Liu, BE280A, UCSD, Fall 2005

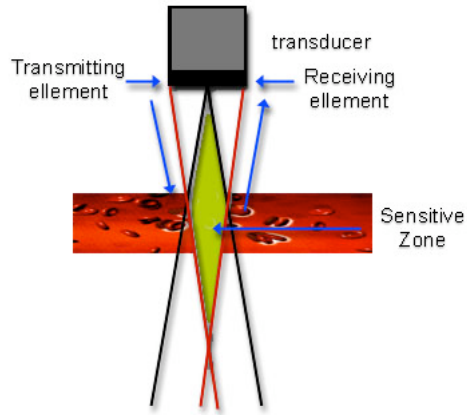
Doppler



http://www.centrus.com.br/DiplomaFMF/SeriesFMF/doppler/capitulos-html/chapter_01.htm

TT Liu, BE280A, UCSD, Fall 2005

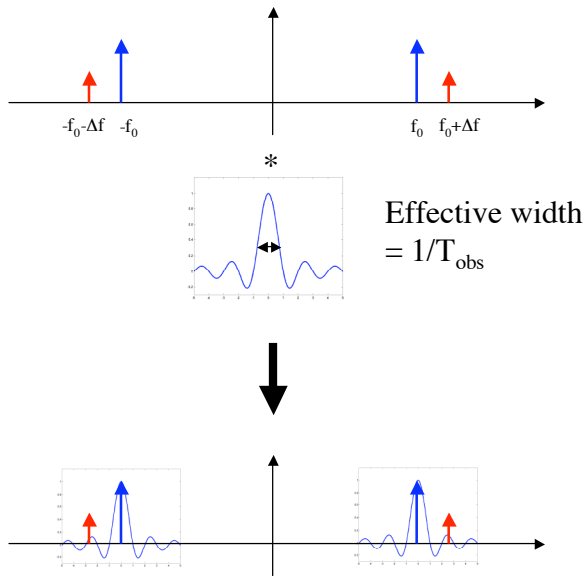
CW Doppler



http://www.centrus.com.br/DiplomaFMF/SeriesFMF/doppler/capitulos-html/chapter_01.htm

TT Liu, BE280A, UCSD, Fall 2005

CW Doppler



TT Liu, BE280A, UCSD, Fall 2005

CW Doppler

Resolution $\Delta f = 1/T_{obs}$

$$\Delta v = \frac{c\Delta f}{2f_0} = \frac{c}{2T_{obs}f_0}$$

Example

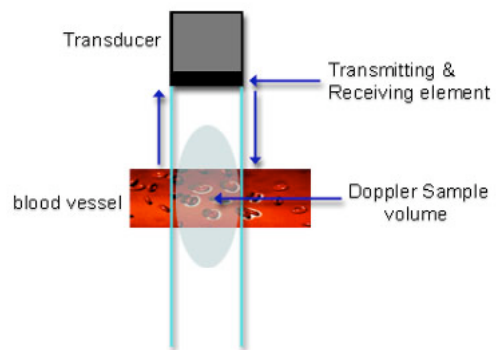
Design goal: $\Delta v = 5 \text{ cm/s}$; $f_0 = 5 \text{ MHz}$

$$T_{obs} = \frac{c}{2\Delta v f_0} = \frac{1500 \text{ m/s}}{2(0.05 \text{ m/s})(5 \times 10^6)} = 3 \text{ ms}$$

Note that for a depth of 15 cm, it takes only 200 usec for echos to return.

TT Liu, BE280A, UCSD, Fall 2005

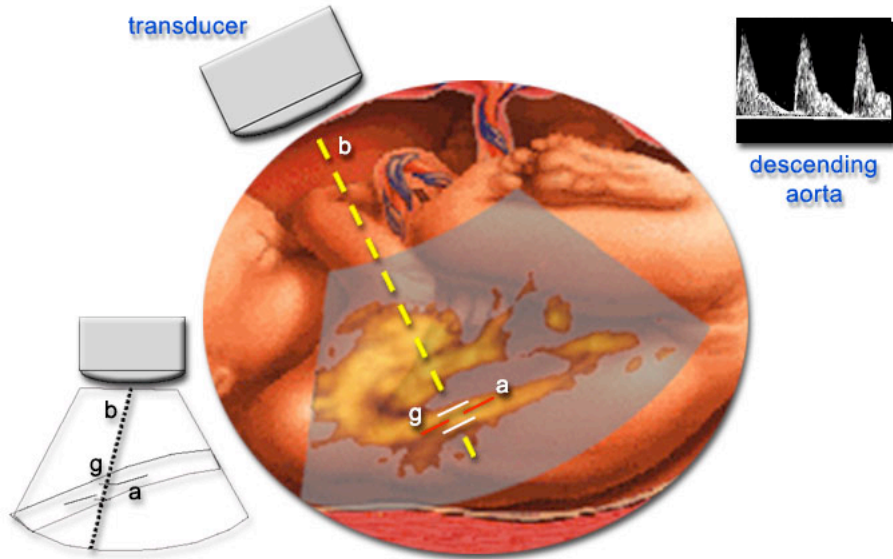
PW Doppler



http://www.centrus.com.br/DiplomaFMF/SeriesFMF/doppler/capitulos-html/chapter_01.htm

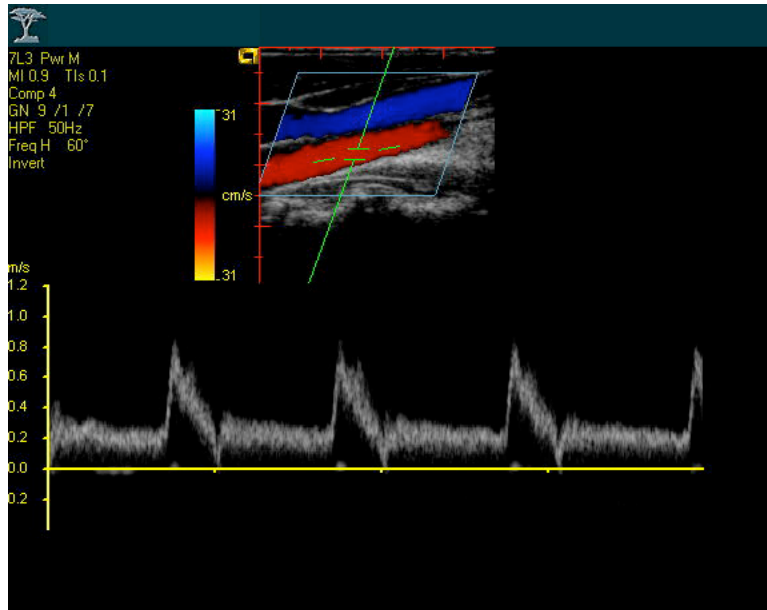
TT Liu, BE280A, UCSD, Fall 2005

PW Doppler



http://www.centrus.com.br/DiplomaFMF/SeriesFMF/doppler/capitulos-html/chapter_01.htm

TT Liu, BE280A, UCSD, Fall 2005



TT Liu, BE280A, UCSD, Fall 2005

Siemens Medical Systems; jnormal common carotid artery

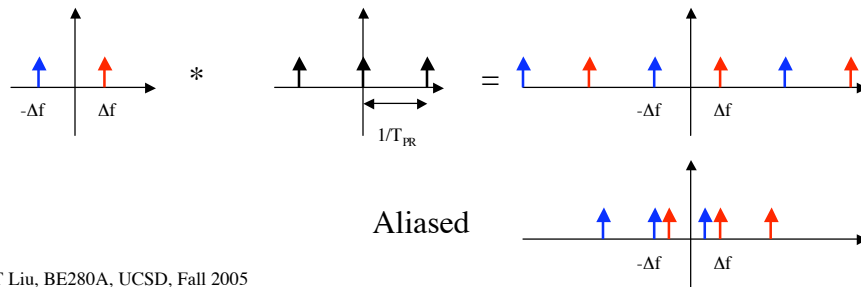
Aliasing

Measure Doppler shifts at a specified range
 For unambiguous range, one pulse at a time.

$$T_{PR} = \frac{2r_{max}}{c} \quad (\text{e.g. } 200 \text{ usec for } 15 \text{ cm depth})$$

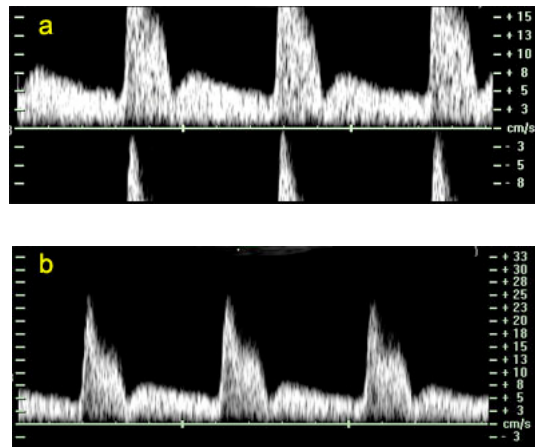
To avoid aliasing require

$$\frac{1}{T_{PR}} > 2\Delta f_{max}$$



TT Liu, BE280A, UCSD, Fall 2005

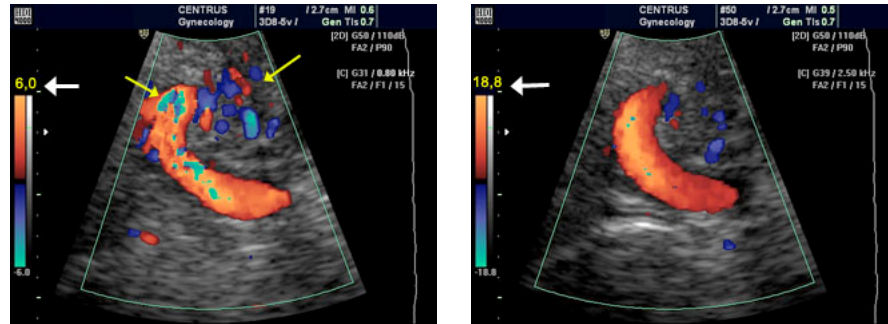
Aliasing



http://www.centrus.com.br/DiplomaFMF/SeriesFMF/doppler/capitulos-html/chapter_01.htm

TT Liu, BE280A, UCSD, Fall 2005

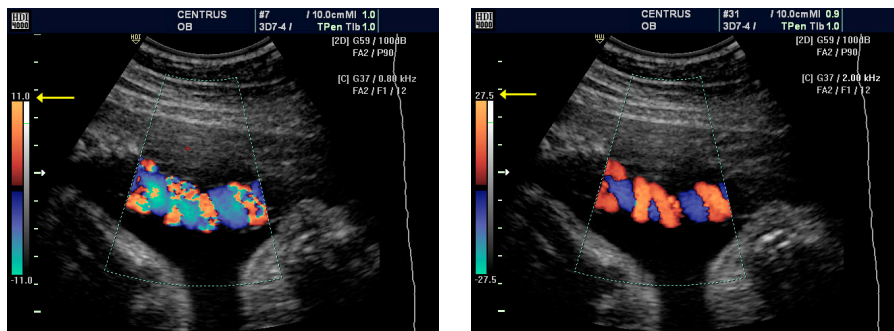
Aliasing



http://www.centrus.com.br/DiplomaFMF/SeriesFMF/doppler/capitulos-html/chapter_01.htm

TT Liu, BE280A, UCSD, Fall 2005

Aliasing



http://www.centrus.com.br/DiplomaFMF/SeriesFMF/doppler/capitulos-html/chapter_01.htm

TT Liu, BE280A, UCSD, Fall 2005

PW Doppler

Velocity Resolution (same as with CW)

$$T_{\text{obs}} > \frac{1}{\Delta f} = \frac{c}{2\Delta v f_0}$$

Range Resolution

Want to interrogate velocities from a small region $\Delta z = \frac{cT_{\text{pulse}}}{2}$

We also need to make sure that particles remain within this region over the observation time T_{obs}

$$v_{\text{max}} T_{\text{obs}} < \Delta z \Rightarrow T_{\text{obs}} < \frac{\Delta z}{v_{\text{max}}} = \frac{cT_{\text{pulse}}}{2v_{\text{max}}}$$

TT Liu, BE280A, UCSD, Fall 2005

PW Doppler

Design Example

$$R_{\text{max}} = 6 \text{ cm} \Rightarrow T_{\text{PR}} = \frac{2(0.06 \text{ m})}{1500 \text{ m/s}} = 80 \text{ } \mu\text{sec}$$

$$\frac{1}{T_{\text{PR}}} > 2\Delta f_{\text{max}} = \frac{4v_{\text{max}}f_0}{c}$$

$$\frac{c}{4T_{\text{PR}}f_0} > v_{\text{max}} \Rightarrow \text{for } f_0 = 5 \text{ MHz, we find that } v_{\text{max}} < 93.75 \text{ cm/s}$$

$$\text{If we choose } \Delta v = 1 \text{ cm/s then } T_{\text{obs}} = \frac{c}{2\Delta v_{\text{max}}f_0} = 15 \text{ ms}$$

$$\text{Range resolution: } \Delta z > v_{\text{max}} T_{\text{obs}} = 1.4 \text{ cm}$$

$$T_{\text{pulse}} = \frac{2\Delta z}{c} = 18.8 \text{ } \mu\text{sec}$$

TT Liu, BE280A, UCSD, Fall 2005