

Bioengineering 280A
Principles of Biomedical Imaging

Fall Quarter 2008
MRI Lecture 4

Thomas Liu, BE280A, UCSD, Fall 2008

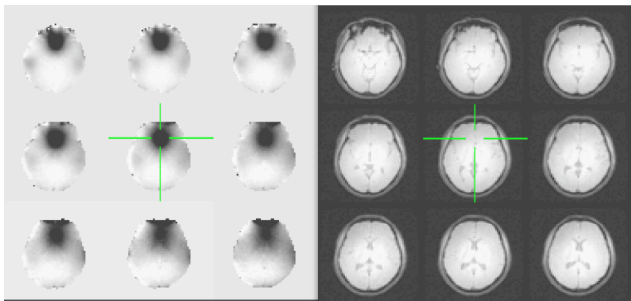
Static Inhomogeneities

In the ideal situation, the static magnetic field is totally uniform and the reconstructed object is determined solely by the applied gradient fields. In reality, the magnet is not perfect and will not be totally uniform. Part of this can be addressed by additional coils called “shim” coils, and the process of making the field more uniform is called “shimming”. In the old days this was done manually, but modern magnets can do this automatically.

In addition to magnet imperfections, most biological samples are inhomogeneous and this will lead to inhomogeneity in the field. This is because, each tissue has different magnetic properties and will distort the field.

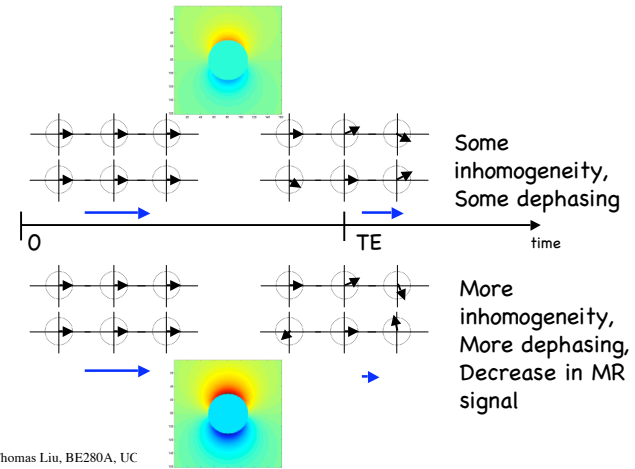
Thomas Liu, BE280A, UCSD, Fall 2008

Field Inhomogeneities



Thomas Liu, BE280A, UCSD, Fall 2008

Signal Decay



Thomas Liu, BE280A, UC

Static Inhomogeneities

The spatial nonuniformity in the field can be modeled by adding an additional term to our signal equation.

$$s_r(t) = \int_V M(\vec{r}, t) dV$$

$$= \int_x \int_y \int_z M(x, y, z, 0) e^{-t/T_2(\vec{r})} e^{-j\omega_0 t} e^{-j\omega_L(\vec{r})t} \exp\left(-j\gamma \int_0^t \vec{G}(\tau) \cdot \vec{r} d\tau\right) dx dy dz$$

The effect of this nonuniformity is to cause the spins to dephase with time and thus for the signal to decrease more rapidly. To first order this can be modeled as an additional decay term of the form

$$s_r(t) = \int_x \int_y \int_z M(x, y, z, 0) e^{-t/T_2(\vec{r})} e^{-t/T_2^*(\vec{r})} e^{-j\omega_0 t} \exp\left(-j\gamma \int_0^t \vec{G}(\tau) \cdot \vec{r} d\tau\right) dx dy dz$$

Thomas Liu, BE280A, UCSD, Fall 2008

T_2^* decay

The overall decay has the form.

$$\exp(-t/T_2^*(\vec{r}))$$

where

$$\frac{1}{T_2^*} = \frac{1}{T_2} + \frac{1}{T_2'}$$

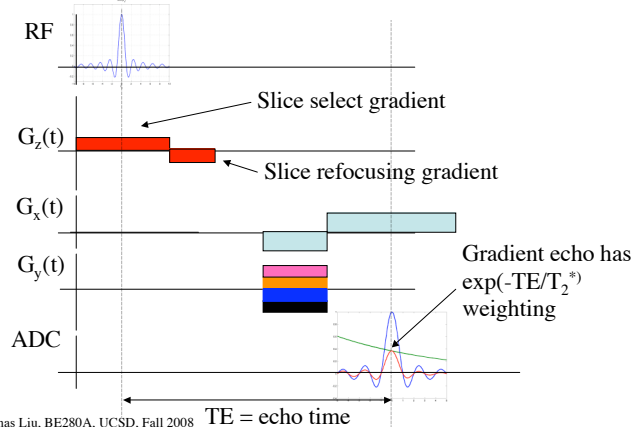
Due to random motions of spins.
Not reversible.

Due to static inhomogeneities. Reversible with a spin-echo sequence.

Thomas Liu, BE280A, UCSD, Fall 2008

T_2^* decay

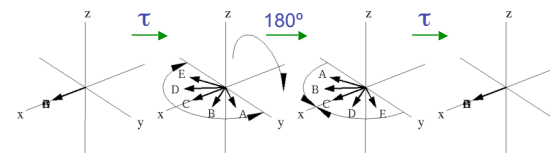
Gradient echo sequences exhibit T_2^* decay.



Thomas Liu, BE280A, UCSD, Fall 2008

Spin Echo

Discovered by Erwin Hahn in 1950.



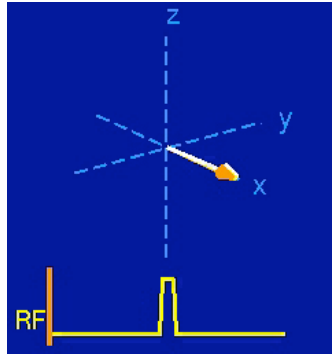
The spin-echo can refocus the dephasing of spins due to static inhomogeneities. However, there will still be T_2 dephasing due to random motion of spins.

There is nothing that nuclear spins will not do for you, as long as you treat them as human beings. Erwin Hahn

Thomas Liu, BE280A, UCSD, Fall 2008

Image: Larry Frank

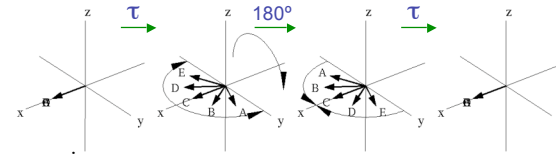
Spin Echo



Source: <http://mrsrl.stanford.edu/~brian/mri-movies/>

Thomas Liu, BE280A, UCSD, Fall 2008

Spin Echo



Phase at time τ

$$\varphi(\tau) = \int_0^\tau -\omega_E(\vec{r}) dt = -\omega_E(\vec{r})\tau$$

Phase after 180 pulse

$$\varphi(\tau^+) = \omega_E(\vec{r})\tau$$

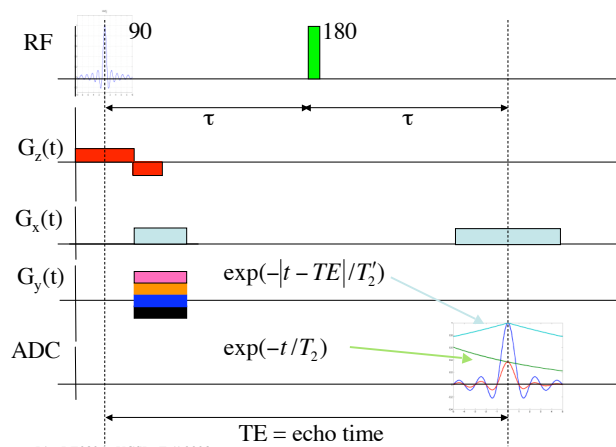
Phase at time 2τ

$$\varphi(2\tau) = -\omega_E(\vec{r})\tau + \omega_E(\vec{r})\tau = 0$$

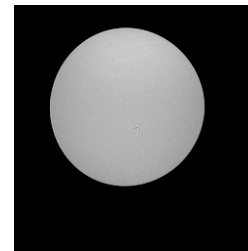
Thomas Liu, BE280A, UCSD, Fall 2008

Image: Larry Frank

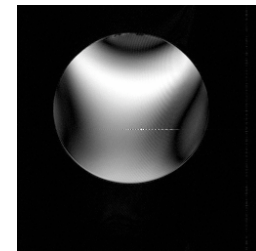
Spin Echo Pulse Sequence



Thomas Liu, BE280A, UCSD, Fall 2008



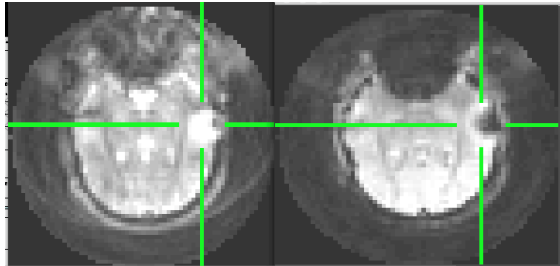
Spin-echo Image



Gradient-Echo Image

<http://chickscope.beckman.uiuc.edu/roosts/carlartifacts.html>

Thomas Liu, BE280A, UCSD, Fall 2008



Spin-echo TE = 35 ms Gradient Echo TE = 14ms

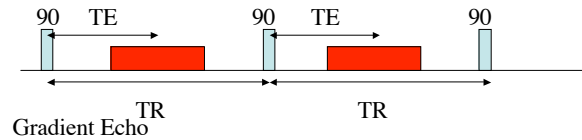
Thomas Liu, BE280A, UCSD, Fall 2008

Image Contrast

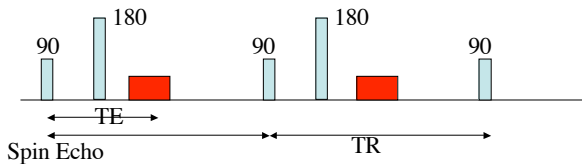
Different tissues exhibit different relaxation rates, T_1 , T_2 , and T_2^* . In addition different tissues can have different densities of protons. By adjusting the pulse sequence, we can create contrast between the tissues. The most basic way of creating contrast is adjusting the two sequence parameters: TE (echo time) and TR (repetition time).

Thomas Liu, BE280A, UCSD, Fall 2008

Saturation Recovery Sequence



$$I(x, y) = \rho(x, y) \left[1 - e^{-TR/T_1(x, y)} \right] e^{-TE/T_2^*(x, y)}$$



$$I(x, y) = \rho(x, y) \left[1 - e^{-TR/T_1(x, y)} \right] e^{-TE/T_2(x, y)}$$

Thomas Liu, BE280A, UCSD, Fall 2008

T1-Weighted Scans

Make TE very short compared to either T_2 or T_2^* . The resultant image has both proton and T_1 weighting.

$$I(x, y) \approx \rho(x, y) \left[1 - e^{-TR/T_1(x, y)} \right]$$

Thomas Liu, BE280A, UCSD, Fall 2008

T2-Weighted Scans

Make TR very long compared to T_1 and use a spin-echo pulse sequence. The resultant image has both proton and T_2 weighting.

$$I(x, y) \approx \rho(x, y)e^{-TE/T_2}$$

Thomas Liu, BE280A, UCSD, Fall 2008

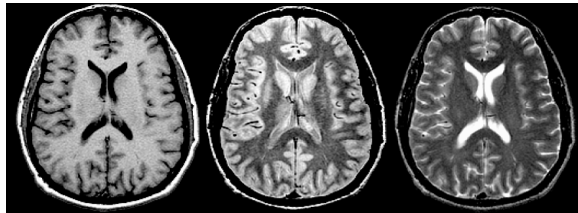
Proton Density Weighted Scans

Make TR very long compared to T_1 and use a very short TE. The resultant image is proton density weighted.

$$I(x, y) \approx \rho(x, y)$$

Thomas Liu, BE280A, UCSD, Fall 2008

Example



T₁-weighted

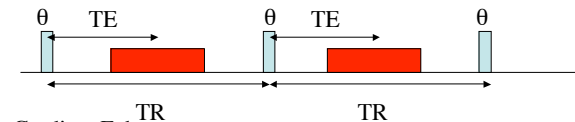
Density-weighted

T₂-weighted

Tissue	Proton Density	T1 (ms)	T2 (ms)
Csf	1.0	4000	2000
Gray	0.85	1350	110
White	0.7	850	80

Thomas Liu, BE280A, UCSD, Fall 2008

FLASH sequence



$$I(x, y) = \rho(x, y) \frac{[1 - e^{-TR/T_1(x,y)}] \sin \theta}{[1 - e^{-TR/T_1(x,y)} \cos \theta]} \exp(-TE/T_2^*)$$

Signal intensity is maximized at the Ernst Angle

$$\theta_E = \cos^{-1}(\exp(-TR/T_1))$$

FLASH equation assumes no coherence from shot to shot. In practice this is achieved with RF spoiling.

Thomas Liu, BE280A, UCSD, Fall 2008

