

Bioengineering 280A  
Principles of Biomedical Imaging

Fall Quarter 2010  
CT/Fourier Lecture 2

TT Liu, BE280A, UCSD Fall 2010

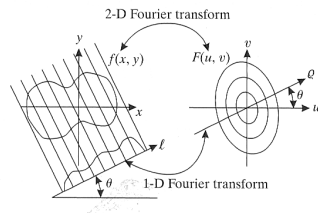
## Topics

- Projection Slice Theorem
- Fourier Transforms

TT Liu, BE280A, UCSD Fall 2010

## Projection Slice Theorem

$$\begin{aligned}
 G(\rho, \theta) &= \int_{-\infty}^{\infty} g(l, \theta) e^{-j2\pi\rho l} dl \\
 &= \int_{-\infty}^{\infty} \int_{-\infty}^{\infty} \int_{-\infty}^{\infty} f(x, y) \delta(x \cos \theta + y \sin \theta - l) e^{-j2\pi\rho l} dx dy dl \\
 &= \int_{-\infty}^{\infty} \int_{-\infty}^{\infty} f(x, y) e^{-j2\pi\rho(x \cos \theta + y \sin \theta)} dx dy \\
 &= F_{2D}[f(x, y)]_{u=\rho \cos \theta, v=\rho \sin \theta}
 \end{aligned}$$

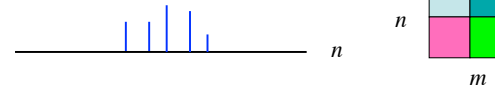


TT Liu, BE280A, UCSD Fall 2010

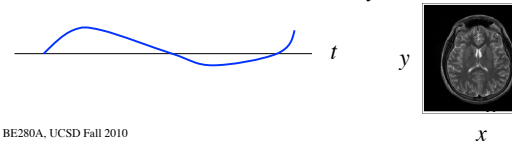
Prince&Links 2006

## Signals and Images

Discrete-time/space signal/image: continuous valued function with a discrete time/space index, denoted as  $s[n]$  for 1D,  $s[m, n]$  for 2D, etc.



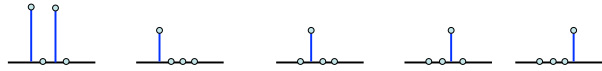
Continuous-time/space signal/image: continuous valued function with a continuous time/space index, denoted as  $s(t)$  or  $s(x)$  for 1D,  $s(x, y)$  for 2D, etc.



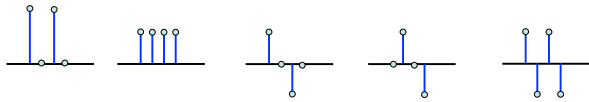
TT Liu, BE280A, UCSD Fall 2010

## 1D Signal Decomposition

$$\{2,0,2,0\} = 2 \cdot \{1,0,0,0\} + 0 \cdot \{0,1,0,0\} + 2 \cdot \{0,0,1,0\} + 0 \cdot \{0,0,0,1\}$$



$$\{2,0,2,0\} = a \cdot \{1,1,1,1\} + b \cdot \{1,0,-1,0\} + c \cdot \{0,1,0,-1\} + d \cdot \{1,-1,1,-1\}$$

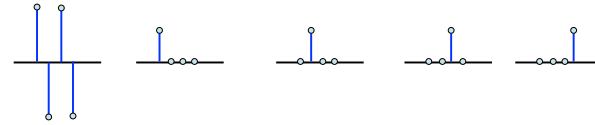


$$\{2,0,2,0\} = 1 \cdot \{1,1,1,1\} + 0 \cdot \{1,0,-1,0\} + 0 \cdot \{0,1,0,-1\} + 1 \cdot \{1,-1,1,-1\}$$

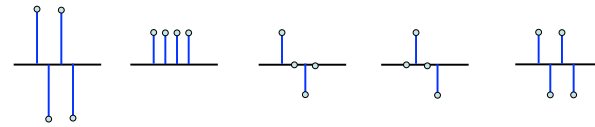
TT Liu, BE280A, UCSD Fall 2010

## 1D Signal Decomposition

$$\{2,-2,2,-2\} = 2 \cdot \{1,0,0,0\} - 2 \cdot \{0,1,0,0\} + 2 \cdot \{0,0,1,0\} - 2 \cdot \{0,0,0,1\}$$



$$\{2,-2,2,-2\} = 0 \cdot \{1,1,1,1\} + 0 \cdot \{1,0,-1,0\} + 0 \cdot \{0,1,0,-1\} + 2 \cdot \{1,-1,1,-1\}$$



TT Liu, BE280A, UCSD Fall 2010

## Eskimo Words for Snow

tlapa	powder snow
tlacringit	snow that is crusted on the surface
kayi	drifting snow
tlapat	still snow
klin	remembered snow
naklin	forgotten snow
tlamo	snow that falls in large wet flakes
tlatim	snow that falls in small flakes
tlasio	snow that falls slowly
tlapinti	snow that falls quickly
kripya	snow that has melted and refrozen
tliyel	snow that has been marked by wolves
tliyelin	snow that has been marked by Eskimos
tlalman	snow sold to German tourists
tlalam	snow sold to American tourists
tlanip	snow sold to Japanese tourists
tla-na-na	snow mixed with the sound of old rock and roll from a portable radio
depptla	a small snowball, preserved in Lucite, that had been handled by Johnny Depp

<http://www.mendoza.com/snow.html>

TT Liu, BE280A, UCSD Fall 2010

## Image Compression



Uncompressed  
378 KB  
1-1

JPEG JFIF  
11.2 KB  
1:33.65  
DQ q 30

JPEG 2000  
11.2 KB  
1:33.65

TT Liu, BE280A, UCSD Fall 2010

## 2D Image

$$\begin{bmatrix} a & b \\ c & d \end{bmatrix} = \begin{bmatrix} a & 0 \\ 0 & 0 \end{bmatrix} + \begin{bmatrix} 0 & b \\ 0 & 0 \end{bmatrix} + \begin{bmatrix} 0 & 0 \\ c & 0 \end{bmatrix} + \begin{bmatrix} 0 & 0 \\ 0 & d \end{bmatrix}$$

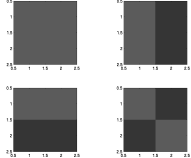
TT Liu, BE280A, UCSD Fall 2010

## Image Decomposition

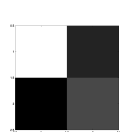
$$\begin{bmatrix} a & b \\ c & d \end{bmatrix} = \begin{matrix} a \\ c \end{matrix} \begin{bmatrix} 1 & 0 \\ 0 & 0 \end{bmatrix} + \begin{matrix} b \\ d \end{matrix} \begin{bmatrix} 0 & 1 \\ 0 & 0 \end{bmatrix} + \begin{matrix} 0 & 0 \\ 1 & 0 \end{matrix} \begin{bmatrix} 0 & 0 \\ 0 & 1 \end{bmatrix} + \begin{matrix} 0 & 1 \\ 0 & 1 \end{matrix}$$

TT Liu, BE280A, UCSD Fall 2010

### Basis Functions



### Coefficients

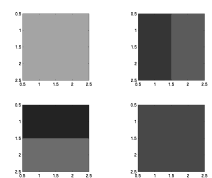


$$\begin{bmatrix} 1/2 & 1/2 \\ 1/2 & 1/2 \end{bmatrix}$$

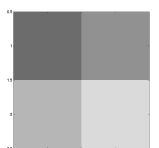
$$\begin{bmatrix} 1/2 & -1/2 \\ 1/2 & -1/2 \end{bmatrix}$$

$$\begin{bmatrix} 1/2 & 1/2 \\ -1/2 & -1/2 \end{bmatrix}$$

$$\begin{bmatrix} 1/2 & -1/2 \\ -1/2 & 1/2 \end{bmatrix}$$



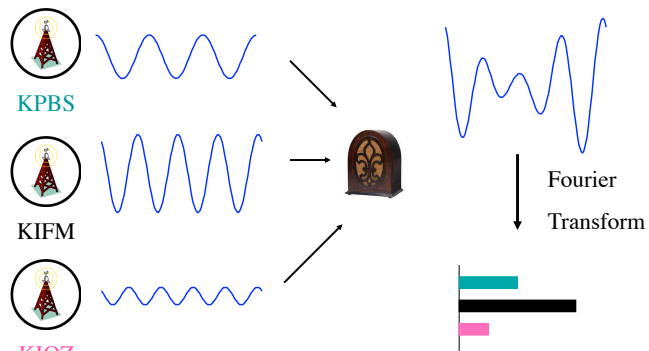
Sum



Object

TT Liu, BE280A, UCSD Fall 2010

## 1D Fourier Transform



TT Liu, BE280A, UCSD Fall 2010

## The Fourier Transform

Fourier Transform (FT)

$$G(f) = \int_{-\infty}^{\infty} g(t)e^{-j2\pi ft} dt = F\{g(t)\}$$

Inverse Fourier Transform

$$g(t) = \int_{-\infty}^{\infty} G(f)e^{j2\pi ft} df = F^{-1}\{G(f)\}$$

TT Liu, BE280A, UCSD Fall 2010

## Complex Numbers

$$j = \sqrt{-1}$$

$$j^2 = ?$$

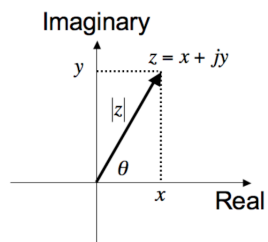
$$(3 + 2j)(3 - 2j) = ?$$

$$j^2 = -1$$

$$(3 + 2j)(3 - 2j) = 9 - 4j^2 = 13$$

TT Liu, BE280A, UCSD Fall 2010

## Complex Numbers



$$z = 2 + 1j$$

$$|z| = \sqrt{2^2 + 1} = \sqrt{5}$$

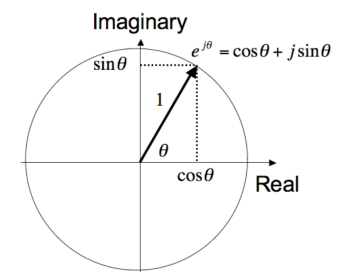
$$\theta = \tan^{-1}\left(\frac{1}{2}\right) = 30 \text{ degrees}$$

TT Liu, BE280A, UCSD Fall 2010

## Euler's Formula

$$e^{j\theta} = \cos\theta + j\sin\theta$$

$$z = x + jy = |z|e^{j\theta}$$



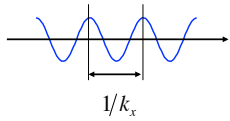
TT Liu, BE280A, UCSD Fall 2010

## 1D Fourier Transform

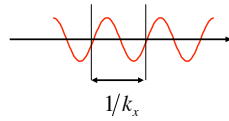
$$G(k_x) = \int_{-\infty}^{\infty} g(x) \exp(-j2\pi k_x x) dx$$

$$= \int_{-\infty}^{\infty} g(x) \cos(2\pi k_x x) dx - j \int_{-\infty}^{\infty} g(x) \sin(2\pi k_x x) dx$$

The part of  $g(x)$  that "looks" like  $\cos(2\pi k_x x)$



The part of  $g(x)$  that "looks" like  $\sin(2\pi k_x x)$



TT Liu, BE280A, UCSD Fall 2010

## Units

Temporal Coordinates, e.g.  $t$  in seconds,  $f$  in cycles/second

$$G(f) = \int_{-\infty}^{\infty} g(t) e^{-j2\pi f t} dt \quad \text{Fourier Transform}$$

$$g(t) = \int_{-\infty}^{\infty} G(f) e^{j2\pi f t} df \quad \text{Inverse Fourier Transform}$$

Spatial Coordinates, e.g.  $x$  in cm,  $k_x$  is spatial frequency in cycles/cm

$$G(k_x) = \int_{-\infty}^{\infty} g(x) e^{-j2\pi k_x x} dx \quad \text{Fourier Transform}$$

$$g(x) = \int_{-\infty}^{\infty} G(k_x) e^{j2\pi k_x x} dk_x \quad \text{Inverse Fourier Transform}$$

TT Liu, BE280A, UCSD Fall 2010

## 2D Fourier Transform

Fourier Transform

$$G(k_x, k_y) = F[g(x, y)] = \int_{-\infty}^{\infty} \int_{-\infty}^{\infty} g(x, y) e^{-j2\pi(k_x x + k_y y)} dx dy$$

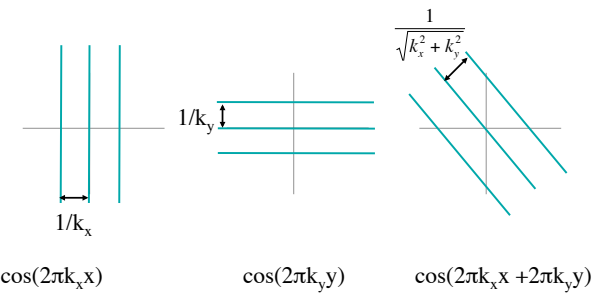
Inverse Fourier Transform

$$g(x, y) = \int_{-\infty}^{\infty} \int_{-\infty}^{\infty} G(k_x, k_y) e^{j2\pi(k_x x + k_y y)} dk_x dk_y$$

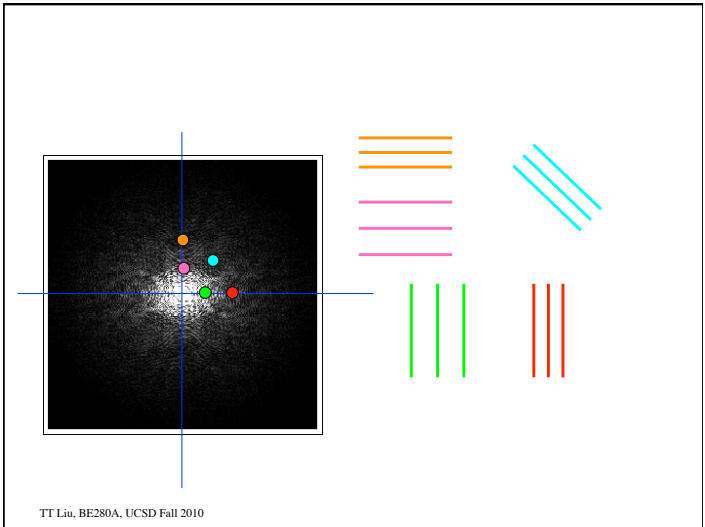
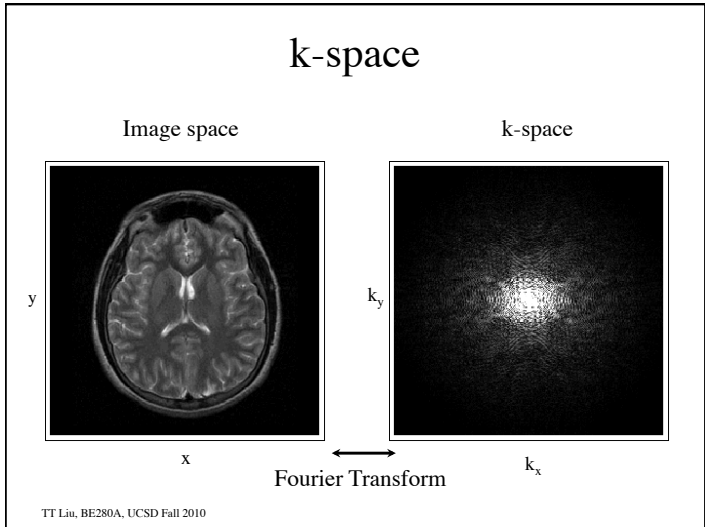
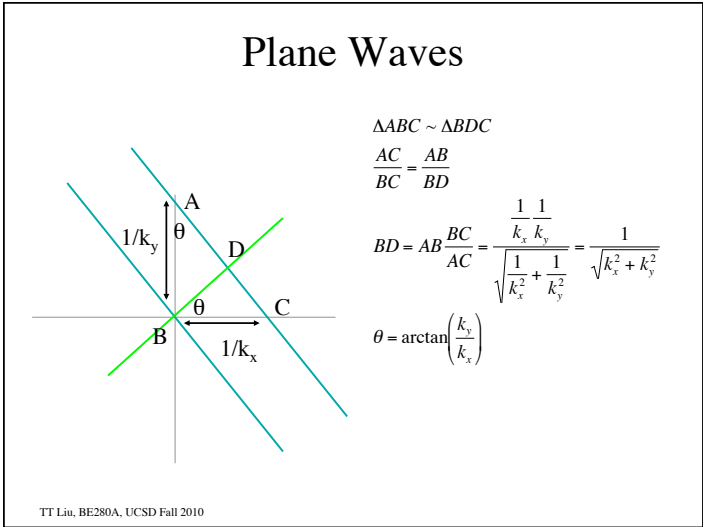
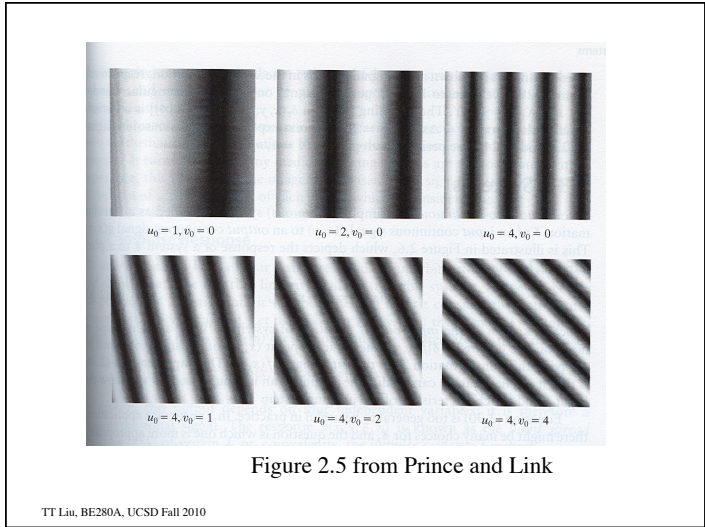
TT Liu, BE280A, UCSD Fall 2010

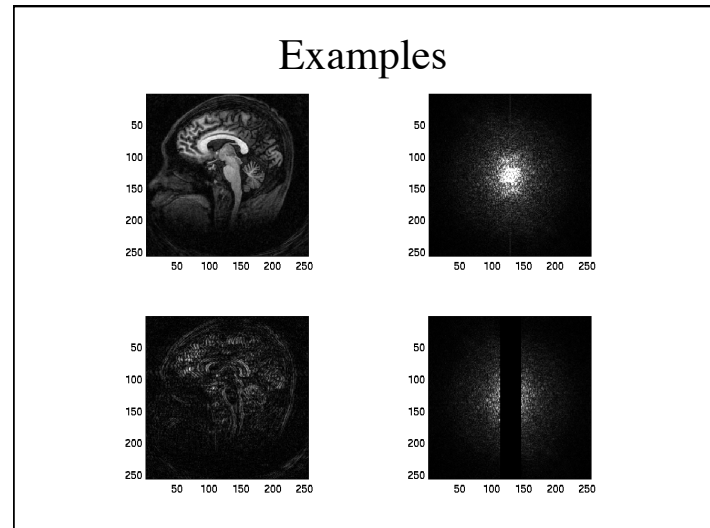
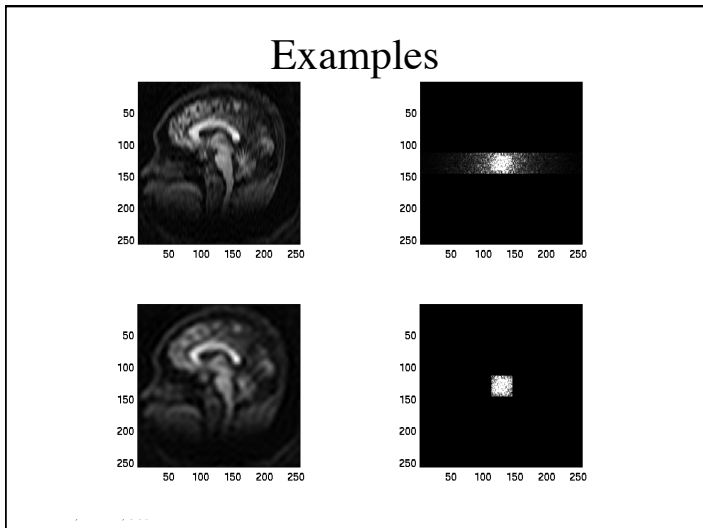
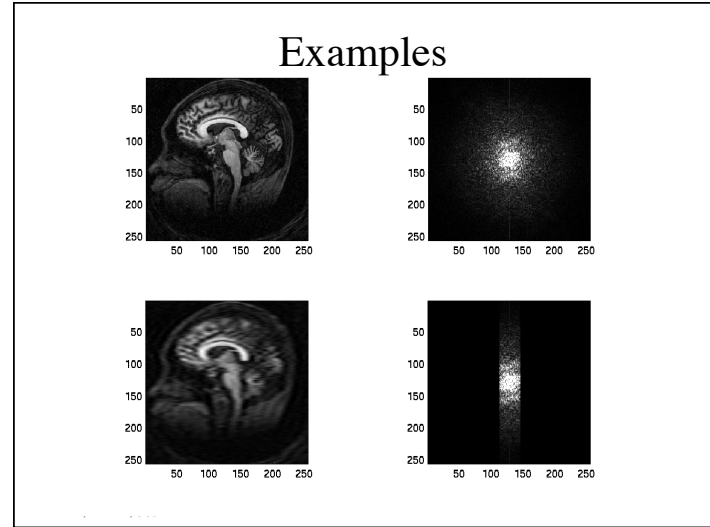
## Plane Waves

$$e^{j2\pi(k_x x + k_y y)} = \cos(2\pi(k_x x + k_y y)) + j \sin(2\pi(k_x x + k_y y))$$

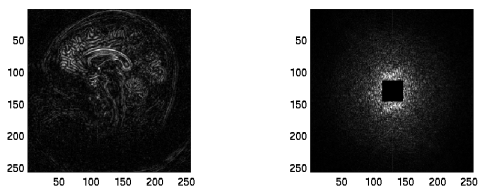
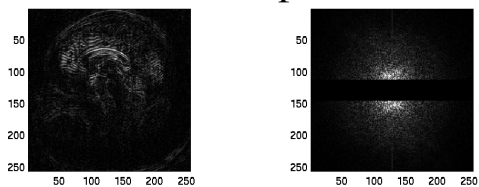


TT Liu, BE280A, UCSD Fall 2010





## Examples



## Examples

